

# YEAR 11 COURSE SELECTIONS

20  
24

Fostering an optimistic future by empowering our college community to succeed



**JOHN TONKIN  
COLLEGE**

EXCELLENCE | RESPECT | COMMITMENT

# PRINCIPAL'S WELCOME

As a student of John Tonkin College, you are growing up in a community that has amazing opportunities and potential for you to lead change. As you move through your teenage years, your confidence will grow and you will discover your potential. It is our job as educators to provide you with a learning environment where you are continually challenged to be the best you can be and where your individual needs and aspirations are recognised.

In Years 11 and 12 of your secondary education, you have the opportunity to select courses that will suit your skills, interests and chosen pathway beyond school. We carefully select a range of courses to offer to you based on the following:

- Pathways to further education and training
- Pathways to employment
- Courses that suit the learning needs and aptitude of JTC students.

Some of you may already have an idea of what you want to do when you leave school in the future. You can look at the range of courses available and select those that will help you pursue the pathway to your chosen career. Alternatively, you may want to keep your options open and select a range of electives that will allow you to further explore different pathways.

Ultimately, we provide you with the opportunity to find success and meaningful pathways beyond school. It is up to you how much effort you put in and therefore how much success you have. Seize the opportunities you have at John Tonkin College and your future will be bright!



Kim Savins

PRINCIPAL

# WACE requirements 2025 and beyond

## 1. General Requirements

You must:

- Demonstrate a minimum standard of literacy (reading and writing) and a minimum standard of numeracy
- Complete a minimum of 20 units, or equivalents over years 11 and 12.
- Complete
  - UniReady Units and/or four ATAR/General courses
  - a Certificate II (or higher) VET qualification in combination with ATAR, General or Foundation courses.

## 2. Literacy and Numeracy Standard

For the WACE literacy and numeracy standard you may:

- pre-qualify through achieving Band 8 or higher in the reading, writing and numeracy tests of the Year 9 National Assessment Program – Literacy and Numeracy (NAPLAN), or;
- demonstrate the minimum standard of literacy and numeracy by achieving Category 3 in the Reading, Writing and Numeracy Component of the Online Literacy and Numeracy Assessment (OLNA) in Year 10, 11 or 12.

## 3. Breadth and Depth

You must complete a minimum of 20 units, which may include unit equivalents attained through VET and/or endorsed programs. This requirement must include at least:

- a minimum of ten Year 12 units, or the equivalent
- four units from an English course, post Year 10, including at least one pair of Year 12 units from an English learning area course
- one pair of Year 12 units from each of List A (arts/languages/social sciences) and List B (mathematics/science/technology) subjects.

## 4. Achievement Standard

You must achieve at least 14 C grades or higher (or equivalents) in Year 11 and Year 12 units, including at least six C grades (or equivalents) in Year 12 units.

## 5. Unit Equivalents

Unit equivalents can be obtained through VET qualifications and/or endorsed programs. The maximum number of unit equivalents available through VET and endorsed programs is four Year 11 units and four Year 12 units with a maximum of four units with endorsed programs – two in Year 11 and two in Year 12.



# WACE 2023 - 2024 Courses In Year 11 and 12

**Typically, you will complete one of the following pathways across Year 11 and 12:**

## Pathway One

### **Curtin University UniReady Program**

You will complete 4 core units plus General courses (and may include one or two ATAR courses) with the aim of achieving a university placement.

UniReady students may enrol in ATAR Mathematics Applications and/or ATAR Human Biology to complement their university pathway.

## Pathway Two

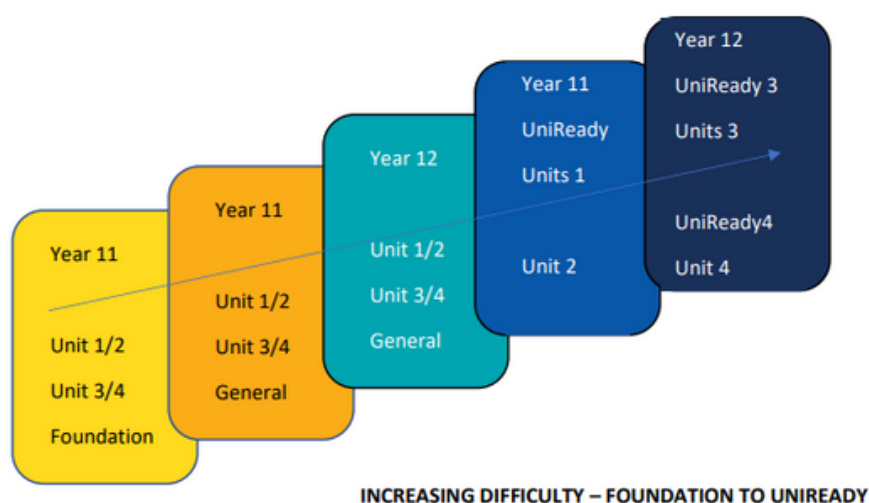
### **General/VET at JTC**

You will choose four General courses, and one Certificate II Course delivered at JTC. You may wish to enrol in Workplace Learning.

## Pathway Three

### **General/ VET (by application) at John Tonkin College or various TAFE locations**

If successful, you will study a Certificate II course or higher at John Tonkin College or at a South Metropolitan Training Institution. You will enrol in Workplace Learning and select four courses.





# Minimum Entry Requirement 2024

- Minimum Entry Requirement, (MER) refers to the standard of academic performance that you need to achieve to demonstrate aptitude and/or suitability for a particular course. Minimum Entry Requirements for specific courses are determined through the analysis of historical data, case studies and consideration of the complexity of course content.
- The concept of Minimum Entry Requirements is common in educational contexts, including university and Training WA enrolments. Stating Minimum Entry Requirements for Years 11 and 12 courses is regarded as standard practice in Western Australian schools, and is supported by the Department of Education.
- The purpose of Minimum Entry Requirements is to clearly indicate the rigour and academic standards of each course. They serve to guide students and parents in the course selection process, so that you choose courses that are appropriate for your academic abilities. The Minimum Entry Requirements are provided to support you to be successful in Years 11 and 12 courses.
- Minimum Entry Requirements for ATAR courses and the UniReady Engabling Program, are expressed in grades. The other desirable attributes may also be described in the 'Additional Information' notes.
- The following table outlines the standards of your performance that would be expected in Years 9 and 10, to enter pathways in Years 11 and 12. This is included courtesy of the Secondary Pathways and Transitions Team, Department of Education.

**Typically;**

Year 9	Year 10	Year 11 & 12	Post School Destination
High A's average NAPLAN Band 9/10	High A average	Units 1-4 ATAR courses UniReady Units 1-4	University or Training WA apprenticeship ECU, ND
Low A or B average NAPLAN Band 7/B	Low A or B average	Units 1-4 ATAR or General courses & higher level Certs	University or Training WA apprenticeship ECU, ND
Low A or B average NAPLAN Band 7/B	Low B or C average	General courses/VET or Units 1-4 Foundation courses as necessary	Training WA traineeships, employment



# WACE - Breadth of Study List 2024

For a you to achieve a WACE in 2025 and beyond, you must complete, in the final year (Year 12), at least one course from each of the following lists. For this purpose, completion of a course means that you have:

- Received a grade in a course in the final year of senior secondary schooling in that course
- Made a genuine attempt in the examination for that course (ATAR courses)

## List A

(Arts/Languages/Social Sciences)

**DRA** Drama  
**ENG** English  
**HEA** Health Studies  
**HIM** Modern History  
**MUS** Music  
**VAR** Visual Art

## List B

(Mathematics/Science/Technology)

**AIT** Applied Information Technology  
**BCN** Building and Construction  
**CHE** Chemistry  
**DESP** Design Photography  
**DEST** Design Technical Graphics  
**FST** Food Science and Technology  
**HBV** Human Biology  
**MMS** Marine and Maritime Studies  
**MDTM** Materials Design and Technology—Wood  
**MAA** Mathematics: Applications  
**MAE** Mathematics: Essential  
**OED** Outdoor Education  
**PES** Physical Education Studies  
**PSY** Psychology

## Please Note:

- It is very important when selecting an ATAR course that attention is paid to (MER) Minimum Entry Requirements.



Government of Western Australia  
School Curriculum and Standards Authority





# VOCATIONAL EDUCATION & TRAINING (VET) PATHWAYS 2024

# Vocational Education & Training (VET)

VET

## What is VET?

Vocational Education and Training encompasses all courses where a student is working towards completing qualifications or units of competence that are recognised nationally. Achievement of a full qualification results in a student being awarded a Certificate II, III, IV or Diploma. Students who complete VET courses gain credit towards their WACE through the completion of units of competency.

Why study a VET Course as part of the WACE?

VET qualifications provide enhanced opportunities for further training and employment and allows students to get started on their career pathway before leaving school.

Students will select JTC courses to complete their senior school program.





# Certificate II Tourism

(Exclusive to JTC Students)

Application Required	<b>No</b>
Delivered	<b>JTC</b>

# VET

## Year 11 (2 Year Course) Certificate II in TOURISM SIT20122



**Year 11** This course is delivered over **TWO** years.

**Course Code:** **SIT20122**

This course is delivered in partnership with the Registered Training Organisation (RTO)

**Skills Strategies International (RTO Code 2401).**

### Minimum Entry Requirements / Prerequisites

- Recommended to have a minimum "C" grade in English.
- Be computer literate or willing to develop computer skills.

### Curriculum Focus

The course is designed for interested students who are eager to learn more about both personal travel and working in the tourism industry. Students will undertake studies that explore destinations, providing excellent customer service, and learning practical skills. Relevant skills required to be a successful, informed tourist will be taught. Additionally, students will investigate career pathways within the tourism industry, and learn required skills to work in the industry.

### Course Content

Students will complete the following Units of Competency core units:

- SITTIND003 Source and use information on the tourism and travel industry
- SITXCCS009 Provide customer information and assistance
- SITXCCS011 Interact with customers
- SITXCOM007 Show social and cultural sensitivity
- SITXWHS005 Participate in safe work practices

Additionally, a range of elective units will be delivered, with a clear focus on Customer service and relations within the tourism and hospitality sectors.

### Additional Information

Units completed in this course can give you credit towards further study in Certificate III Tourism and/or other VET Certificate courses.

The pathway continues to VET training providers, and potentially University, where students may undertake a Bachelor of Tourism.

# Certificate II in Sampling & Measurement

Application Required	Yes
Delivered	JTC

VET

## Year 11 (2 Year Course) Certificate II in Sampling and Measurement MSL20122



**South  
Metropolitan**

### Course Outline

**Do you want to be part of construction, manufacturing, resources and environmental industry sectors!**

This qualification is designed to provide the learner with foundation skills on how to perform a range of sampling and measurement activities as part of laboratory, production or field operations in the construction, manufacturing, resources and environmental industry sectors.

Some of the skills taught in this qualification include:

- following set procedures to sample raw materials and products
- package, label, store and transport samples
- using simple equipment (hydrometers, thermometers and pH meters) to make measurements
- performing basic tests that take a short time and involve a narrow range of variables and
- easily recognised control limits
- making visual inspection of products and packaging

### Course Overview

Campus

Duration and day

Work practice requirements

Uniform and supplies

Incidental costs

Job outcomes

**Murdoch campus, John Tonkin College**

2 years (7 terms), Murdoch, Thursdays

2 years (7 terms), John Tonkin College, Fridays

Not applicable

Students to supply and bring/wear:

- Enclosed shoes
- T-shirt/polo (not sleeveless) and trousers (no shorts)
- Hair tie (if long hair)
- Pen, exercise book, calculator

Not applicable

Samplers and testers, Production personnel, Plant operators, Production operators, Field assistants, Drivers and sample couriers.

Find out more (video)



More information

[www.southmetrotafe.wa.edu.au/courses/agriculture-animals-science-and-environment](http://www.southmetrotafe.wa.edu.au/courses/agriculture-animals-science-and-environment)

# Certificate III in Business

Application Required	Yes
Delivered	MET Campus

VET

## Year 11 (1 Year Course) Certificate III in Business BSB30120



### Course Outline

#### Do you want the skill for a flexible career that could take you anywhere?

When you complete the Certificate III in Business, you'll have skills that employers are looking for, making you ideal for roles in data entry, customer services, accounts or as an office clerk.

Gain these skills:

- Basic MYOB
- Workplace organisation
- Customer service
- Workplace health and safety
- Desktop publishing, spreadsheets, creating electronic presentations.

With industry and government forecasting a strong demand for office workers in coming years, you'll be ready for recruiting.

### Course Overview

Campus	Thornlie campus, Mandurah campus
Duration and day	5 Terms, Thursday (One day per week)
Work practice requirements	Not applicable
Uniform and supplies	Need casual clothes
Incidental costs	Not applicable
Job outcomes	Office clerk, Office assistant, Accounts clerk, Receptionist, Administration officer, Office support, Data entry

Find out more (video)



More information  
[www.southmetrotafe.wa.edu.au/courses/business-and-finance](http://www.southmetrotafe.wa.edu.au/courses/business-and-finance)

# Certificate III in Engineering

Application Required	Yes
Delivered	JTC

VET

## Year 11 (1 Year Course)

### Certificate III in Engineering - Technical MEM30522



South  
Metropolitan

#### Course Outline

#### Are you ready to engineer a mechanically technical career in design world of defence industry?

This qualification aims to teach basic skills needed to gain initial employment in an engineering office. The Certificate III will look at the industries of civil, structural, mechanical and electrical engineering. Skills such as mathematics, drafting and design, selecting, assembling, setting up and maintaining simple equipment and systems to a prescribed routine or standard will be covered in this qualification. This course is designed to:

- Provide a thorough grounding in the engineering, physical and mathematical sciences
- Develop an appreciation of the management of engineering activities
- Develop the ability to undertake life-long professional learning
- Develop an awareness of the professional responsibility for a sustainable environment
- Provide articulation to university undergraduate courses

This qualification will prepare you to respond quickly to workplace requirements and provide technical support skills to multiple departments within the defence industry such as research, design, operations, and maintenance.

#### Course Overview

Campus

Duration and day

Work practice requirements

Uniform and supplies

Incidental costs

Job outcomes

#### Munster campus, John Tonkin College

1 year (3 terms), Munster - Thursday or Friday (1 day per week)

1 years (3 terms), John Tonkin College - Thursday (1 day per week)

Not applicable

Students to supply and bring/wear:

- Enclosed shoes, Long pants/jeans, A long sleeve shirt may be required for some lessons of the practical units.
- Scientific calculator
- 1 x 2H pencil, 1 x HB pencil, 1 x 2B pencil, 1 x eraser, 1 x sharpener, 1 x A4 notepad, 1 x USB flash drive.

\$200 Textbook

Assistant production scheduler, Draftsperson (Mechanical detail),

Engineering assistant technical, Engineering draftsperson (Mechanical) - Computer Aided Drafting, Engineering trainee (Mechanical), Trainee in engineering company and Technical officer.

Find out more (video)



More information

[www.southmetrotafe.wa.edu.au/courses/engineering-and-mining](http://www.southmetrotafe.wa.edu.au/courses/engineering-and-mining)



# Certificate III in School Based Education Support

Application Required	Yes
Delivered	JTC

VET

## Year 11 (1 Year Course)

### Certificate III in School Based Education Support CHC30221



South  
Metropolitan

#### Course Outline

You will learn how to implement planned education programs, assist students in their learning and development, contribute to the safety and health of students and support students with additional needs, work effectively with culturally diverse students and colleagues. As part of this qualification, you will undertake work placement where you will be able to apply the skills and knowledge you have learned in a classroom setting.

#### Course Overview

##### Important Information

##### Campus

##### Duration and day

##### Work practice requirements

##### Uniform and supplies

##### Incidental costs

##### Additional Information

##### Job outcomes

##### Entry Requirement: C Grades in Year 10 English and Maths or OLNA or NAPLAN year 9, B and 8

Rockingham campus, John Tonkin College

1 year (3 terms), Rockingham- Friday (1 day per week)

1 year (3 terms), John Tonkin College - Friday (1 day per week)

Work placement to be completed on another day other than the tafe release day. It is a requirement that students undertake the work placement learning course with their school. Students will be required to complete 100 hours of work placement (minimum of 16 days placement in addition to scheduled Friday class) in a regulated school environment. Students must complete all workplace tasks outlined within the South Metropolitan TAFE training record book as part of their qualification requirements. Schools need to ensure that students have all the industry required clearances before commencing work placement. Students over the age of 18 years are required to obtain a Working with Children Check. Students to supply and bring/wear:

- Students need to dress to the standard required to work in a school setting.

Not applicable

Students will be required to attend 2 mandatory days for First Aid on a Saturday.

Education assistant, Education aide

Find out more (video)



More information

[www.southmetrotafe.wa.edu.au/courses/education-and-community-services](http://www.southmetrotafe.wa.edu.au/courses/education-and-community-services)

## VET at TAFE (Profile) Courses 2024

You can apply for Profile courses which are delivered by State Training Providers such as South Metro TAFE and North Metro TAFE.

### Location of VET at TAFE (Profile) Courses

You may be required to travel to different training locations on the days of their course. Some courses may be delivered at the Mandurah Education Training Campus (MET) but many are delivered in various locations including Rockingham, Murdoch, Fremantle, Jandakot, and even Perth. You are responsible for making your way to and from these locations.

### Important Considerations!

Students applying for VET at TAFE (Profile) MUST consider in their decision-making process the location of some of these courses as some are quite difficult for students to get to, requiring bus and train and several hours of travel a day.

### Applying for VET and TAFE (Profile) Courses

Applications for VET at TAFE (Profile) courses are highly competitive as TAFE takes students from many schools in the South Metropolitan region. As a minimum, students must be achieving a C grade in Maths and English in Semester One. A strong attendance record at school and positive comments by teachers on your Semester One Year 10 reports are also essential.

You will be asked to complete an Expression of Interest form with up to TWO TAFE courses selected and return it to the VET office by the start of week two term three. Once the online applications open you will be contacted and asked to attend an appointment with the VET team to complete your online application. Parents are welcome to attend this appointment. Semester One year 10 report, Resume and Supporting Statement must be attached to this application. Students will also need a Unique Student Identification Number (USI), if needed we can help you apply for one during your application appointment.

The VET at TAFE (Profile) selection process will be completed in early term four and the VET team will then notify you with the result of your application.

At this stage, changes can then be made to timetables if necessary to accommodate the VET at TAFE (Profile) course.

## Types of VET at TAFE (Profile) Courses Offered

JTC students have typically been able to access Certificates courses in the following areas:

- **Accounting**
- **Aquaculture**
- **Automotive**
- **Aviation**
- **Beauty & Fitness**
- **Business**
- **Community & Education Services**
- **Electrical and Electrotechnology**
- **Engineering & Mining**
- **Events Management**
- **Fashion**
- **Fishing Operations**
- **Fitness**
- **Hairdressing**
- **Health and Nursing Services**
- **Hospitality**
- **Information Technology**
- **Integrated Technology**
- **Jewellery**
- **Laboratory Operations**
- **Library & Information Services**
- **Media**
- **Music**
- **Retail Cosmetics**
- **Warehouse/Logistics**
- **Tourism**
- **Warehouse**

The following 4 profile courses will be run at the JTC MET campus.

- Cert II in Sampling and Measurement
- Cert III in Business
- Cert III in Engineering - Technical
- Cert III in School Based Education Support



## Vocational Education & Training (VET) continued

VET at TAFE (Profile) Courses typically offered by South Metro (SMTAFE) and/or North Metro TAFE (NMTAFE) each year.

TAFE will release their final course offerings for 2024 end of term 2.

### Brief Descriptions:

#### Accounting

This course is suitable for people who are comfortable working with numbers and financial concepts and have good problem solving and analytical skills. You will be introduced to basic accounting skills and terminology preparing you for roles such as payroll and/or accounts clerk.

#### Animal Studies

This course teaches the practical skills and knowledge to assist in a veterinary practice or other animal care establishments such as kennels or catteries.

#### Aquaculture

This course will enable you to work in a simulated work environment, and gain skills and knowledge in the care and maintenance of aquatic organisms, safe food handling, controlling pests, predators and diseases, handling and harvesting stock as well as maintaining and manipulating the water environment.

#### Automotive

You will gain a feel for the automotive industry and identify and work with light and heavy vehicles on particular components such as steering and suspensions or cooling systems.

#### Aviation

These courses include Aeroskills (Mechanical Pre-apprenticeship), Cabin Crew, Remote Pilot and Support services and Operations.

#### Beauty and Fitness

Courses on offer include Fitness, Retail cosmetics and Make-up. In the fitness course you will work in a fully equipped commercial fitness centre developing skills for the role of gym instructor and putting you on a pathway to becoming an accredited Personal trainer. In the Retail Cosmetics and Make-up courses you will develop skills to allow you to sell and retail cosmetic products and perform routine salon functions and work in cosmetic studios and photography, film and television make-up industry.

#### Business

The Business Administration (medical or legal) courses provide you with a range of business administration skills and understanding of confidentiality and security issues preparing you for a role as legal or medical receptionist/secretary, clerk or support staff.

#### Community Services - Childcare

This course provides you with the skills of communication and team work enabling you to work with a range of community members including youth, aged, people with disability, mental health, drug and alcohol issues, refugees, migrants and the homeless in the community services industry.

#### Community Services - Early Childhood

This course will provide you with the skills required by employees working in the Child-care industry. You will complete work experience in a childcare centre as part of this course

#### Community Services - Early Childhood Education and Care

This course reflects the role of educators in early childhood education. In this course you will develop skills in supporting children's wellbeing and development in the context of an approved learning framework and implementation of policies and procedures.

#### Community Services - Education Support

In this course you will learn how to implement planned education programs, assist students in their learning and development, assist with the safety and health of students and support students that require additional needs in the Education Support sector.

#### Construction - Carpentry and Joinery

Learn skills in handling construction materials, basic hand skills, reading building plans, measuring and calculations with a focus on carpentry and joinery.

#### Construction - Plumbing

Learn skills in handling construction brick and block materials, basic hand skills, reading building plans, measuring and calculations with a focus on plumbing.

#### Electronics

Provides you with the competencies to select, assemble, set-up and maintain simple equipment and systems to a prescribed routine.

#### Electrical and Electrotechnology - Pre-apprenticeship

This course teaches the practical skills and knowledge to install, operate, and maintain electrical and communications equipment and systems for domestic, business and industrial sectors.

#### Engineering and Mining

The skills gained in these qualifications enhance your prospects in the metal fabrication, fitting and machining and mining and resource industries.



## Vocational Education & Training (VET) continued

VET at TAFE (Profile) Courses typically offered by South Metro (SMTAFE) and/or North Metro TAFE (NMTAFE) each year.

TAFE will release their final course offerings for 2024 end of term 2.

### Brief Descriptions:

#### Events

In this course you will learn in a diverse and flexible environment where you will gain exposure to the Events Industry and develop event industry skills including events administration and operational skills.

Fashion

#### Fashion

In this course you will learn to design and make contemporary fashion garments allowing you to combine both creative and practical skills in a creative studio space.

#### Fishing Operations

This course will provide you with the basics skills required to start working in the fishing sector of the seafood industry. You will develop an understanding of routine processes and procedures, including maintaining fishing gear, operating small vessels and using deck equipment.

#### Hairdressing

This course provides you with the skills and knowledge to support professional hairdressers to carry out a range of salon services.

#### Health and Nursing Services

The Population Health course is ideal if you are interested in working in primary health, community health, allied health or health promotion. In this course you will develop skills to encourage people to identify positive health behaviours, take clinical measurements, provide health education and understand the impact of the determinants of health. The Preparation for Health and Nursing Studies provides you with the academic knowledge for entry into the Diploma of Nursing course and gets you one step closer to a career as an Enrolled nurse or Registered Nurse.

#### Hospitality and Food

The Hospitality course will provide you with the skills and knowledge required to work in various hospitality sectors including restaurants, hotels, motels and clubs where housekeeping of facilities are required. The Kitchen Operations (Pre-apprenticeship) course will provide you with the skills of basic food preparation and cooking skills that will enable you to work in the field of kitchen operations in restaurants, hotel's catering facilities, coffee shops and cafes.

#### Information Technology

You will learn the fundamentals of programming, web development or cyber security.

#### Integrated Technology

In the Electronics course you will develop the knowledge and practical workshop skills to assemble and replace electronic components, troubleshoot DC circuits, use test equipment and utilise workplace health and safety and sustainable practices.

#### Jewellery

In this course you will develop a range of skills to enable you to work in the jewellery industry as a jewellery maker and is a precursor to further study in Jewellery Design.

#### Laboratory Operations

This course will provide you with skills and knowledge required to work in a range of laboratory fields including biomedical, pharmaceutical, cosmetics, medical, mining, petroleum, agriculture, physics, chemical environmental, food or forensics.

#### Library and Information Services

This course will provide you with the skills and knowledge to assist in the organisation and operation systems for handling recorded information. Completion of the course will provide you with opportunity to work in roles including Library Assistant, Library Attendant, Library Clerk and Library Officer.

#### Media

You will learn to develop and extend your creative thinking skills. The two main areas of skill in this course are animation and digital effects, and digital content and imaging.

#### Music

In this course you will develop skills in song writing and arranging, ensemble/performance and recording. You will have the opportunity to participate in recording sessions and you will follow the production process through to the completion of a demo recording.

#### Tourism

This course will provide you with the pathway to working in multiple tourism industry sectors including tour operators, visitor information centres, tourist attractions, travel consultants and many more.

#### Warehouse and Logistics

You will gain skills in safety management, general warehousing, customer services and despatching. Once complete you will be able to start a career in warehousing, transport, and logistics.

**If you require any further information about these courses, contact the JTC VET Coordinator on 9583 0548**



ITTO # 40548



## Vocational Education & Training (VET) continued

### VET at TAFE (Profile) Application Timeline

#### Term 3

##### Week 1

Applications for VET at TAFE (Profile) open Week 1 of Term 3 students are strongly encouraged to do their applications via the VET office at JTC.

Assembly – There will be a PowerPoint presentation on the subject selection process for Year 10 transitioning to Year 11 including University pathway and VET/General pathway. You will receive Expression of Interest forms for **Profile** courses at TAFE for 2024.

You will complete a Supporting Statement and Resumé during Extended Homeroom classes which will be required at the appointment and will be attached electronically to their application along with the Year 10 Report.

**Applications WILL NOT be accepted by TAFE without a current School Report and a USI.** The Supporting Statement and Resume are there to enhance your application in a highly competitive process.

It is also important to note that you will only be able to put in an application for **Max of TWO** Profile courses.

##### Week 3 - 5

Students who completed an Expression of Interest form will be contacted with an appointment time to complete their Online Application for Profile course. These appointments will be in the VET Office.

##### Week 7

This is your final week to complete online applications. Applications open week one term 3 and close Week 7 term 3 2023.

You will be notified about the results of your applications. Successful students will require an appointment with JTC Administration to renegotiate their timetables adding the VET at TAFE (Profile) Course and ADWPL.

Once you have accepted the placement a Parent AND Student interview will also be required with the VET Coordinator at JTC to discuss all processes and to complete formalities.

#### Term 4

##### Week 1 Onwards

On acceptance to the course, SMTAFE /NMTAFE will notify you of information sessions in regards to your new course. You and your parents are expected to attend the appropriate session.

**NOTE: You must bring your Resume, Supporting Statement and USI or Medicare Card to the appointment!**





# UNIVERSITY PATHWAY COURSES 2024

# UniReady Program

UNI

## UniReady Program



Curtin University

### Minimum Entry Requirements

- **B grade or higher for Year 10 English.**
- **Attitude, Behaviour and Effort (ABE) prerequisite of 'consistently meets deadlines'.**
- **UniReady is a senior school university pathway offered at John Tonkin College in 2024.**
- **The UniReady Enabling Program is recognised as a WACE Endorsed Program. The UniReady units contribute towards WACE achievement.**

### What is UniReady?

UniReady is an alternate entry pathway, run by Curtin University. Students complete four units during Years 11 and 12, and upon successful completion of the course, are awarded a notional ATAR of 70 and English competency. This will provide entry into a number of Curtin's minimum entry courses.

UniReady units will be taught by John Tonkin College teachers who will liaise with Curtin University to deliver the program.

### How is UniReady different to ATAR?

The traditional ATAR pathway focuses on the academic knowledge required for each specific field of study. However, UniReady students develop transferable study and communication skills needed for University. Core units focus on developing students' skills in terms of reading, writing and communication. Optional units introduce students to the different study areas, and cover both the required academic content as well as developing general study and technical skills.

### What can students study after successful completion of UniReady?

Successful completion of UniReady leads to a range of Curtin Health Sciences, Science and Engineering, Humanities and Business courses. View the full list of courses that UniReady leads to at [curtin.edu.au/uniready](http://curtin.edu.au/uniready).

Please note, UniReady students do not gain direct entry to Construction Management and some Science and Engineering courses. However, once at university, students may apply to enter these courses after successful completion of prerequisite units.

### What do UniReady students study?

The program is designed to develop students' independent learning skills and prepare them for university study. At John Tonkin College, Year 11 students will study two core compulsory units, and in Year 12, they study two optional units.

Students will select four additional courses from the John Tonkin College Year 11 Prospectus for 2024.

It is recommended that UniReady students select ATAR Mathematics Applications if they have teacher recommendation.

It is recommended that UniReady students interested in studying Health Sciences at University, enrol in ATAR Human Biology.

### Core Units Year 11

- Fundamentals of Academic Writing
- Foundations of Communication

### Two Units Year 12

- Introduction to Health Sciences
- Introduction to Humanities

For more information, please contact the Associate Principal at the MET Campus and/or visit [curtin.edu.au/uniready](http://curtin.edu.au/uniready).



# ATAR Human Biology

UNI

**Year:** 11

**Code:** A1HBY A2HBY

## Minimum Entry Requirement

- B Grade or higher for Science (Biology)
- Attitude, Behaviour and Effort (ABE) prerequisite of 'consistently meets deadlines'

## Curriculum Focus

In this course, students learn about themselves, relating structure to function and how integrated regulation allows individuals to survive in a changing environment. You will research new discoveries that are increasing our understanding of the causes of dysfunction, which can lead to new treatments and preventative measures. Reproduction is studied to understand the sources of variation that make each of us unique individuals. Population genetics is studied to highlight the longer term changes leading to natural selection and evolution of our species. The course content deals directly and indirectly with many different occupations in fields, such as science education, medical and paramedical fields, food and hospitality, childcare, sport and social work.

### A1HBY

This unit looks at how human structure and function supports cellular metabolism and how lifestyle choices affect body functioning. Cells contain structures that carry out a range of functions related to metabolism, including anabolic and catabolic reactions. Students investigate questions about problems associated with factors affecting metabolism. They trial different methods of collecting data, use simple calculations to analyse data and become aware of the implications of bias and experimental error in the interpretation of results. They are encouraged to use ICT to interpret and communicate their findings in a variety of ways.

### A2HBY

This unit provides opportunities to explore, in more depth, the mechanisms of transmission of genetic materials to the next generation, the role of males and females in reproduction, and how interactions between genetics and the environment influence early development. Students collect a variety of quantitative and qualitative data. They apply simple mathematical manipulations to quantitative data, present it appropriately, and discuss sources and implications of experimental error. They also consider the limitations of their procedures and explore the ramifications of results that support or disprove their hypothesis. They are encouraged to use ICT in the analysis and interpretation of their data and presentation of their finding.

## Additional Information

**Due to its mathematical content, you will need to satisfy the entry requirements needed to enrol in a Year 11 Mathematics course that can lead to university studies. A strong ability in Mathematics is central to success in this course.**



You are strongly advised to read the detailed description in the SCSA Syllabus and Support Materials available at:  
[www.senior-secondary.scsa.wa.edu.au/syllabus-and-support-materials/science/human-biology](http://www.senior-secondary.scsa.wa.edu.au/syllabus-and-support-materials/science/human-biology)



# ATAR Mathematics Applications

UNI

**Year:** 11

**Code:** A1MAA A2MAA

## Minimum Entry Requirement

- C grade for Mathematics in Year 10
- Attitude, Behaviour and Effort (ABE) prerequisite of 'consistently meets deadlines'

## Curriculum Focus

Mathematics Applications is an ATAR course which focuses on the use of mathematics to solve problems in contexts that involve financial modelling, geometric and trigonometric analysis, graphical and network analysis, and growth and decay in sequences. It also provides opportunities for you to develop systematic strategies based on the statistical investigation process for answering questions that involve analysing univariate and bivariate data, including time series data.

## Course Content

### A1MAA

In this unit 'Consumer Arithmetic' reviews the concepts of rate and percentage change in the context of earning and managing money, and provides a context for the use of spread sheets. 'Algebra and Matrices' continues the Year 7–10 study of algebra and introduces the new topic of matrices. The emphasis of this topic is the symbolic representation and manipulation of information from real-life contexts using algebra and matrices. 'Shape and Measurement' extends the knowledge and skills you developed in the Year 7–10 curriculum with the concept of similarity and associated calculations involving simple and compound geometric shapes. The emphasis in this topic is on applying these skills in a range of practical contexts, including those involving three-dimensional shapes.

### A2MAA

In this unit, 'Univariate Data Analysis and the Statistical Investigation Process' develops your ability to organise and summarise univariate data in the context of conducting a statistical investigation.

'Applications of Trigonometry' extends your knowledge of trigonometry to solve practical problems involving non-right-angled triangles in both two and three dimensions, including problems involving the use of angles of elevation and depression and bearings in navigation. 'Linear Equations and their Graphs' uses linear equations and straight-line graphs, as well as linear-piece-wise and step graphs, to model and analyse practical situations.

## Additional Information

**This course is designed for students who want to extend their mathematical skills beyond Year 10 level, but whose future studies or employment pathways do not require knowledge of calculus. The course is designed for students who have a wide range of educational and employment aspirations, including continuing their studies at university or TAFE.**



You are strongly advised to read the detailed description in the SCSA Syllabus and Support Materials available at: [www.senior-secondary.scsa.wa.edu.au/syllabus-and-support-materials/mathematics/mathematics-applications](http://www.senior-secondary.scsa.wa.edu.au/syllabus-and-support-materials/mathematics/mathematics-applications)



# GENERAL COURSES 2024



# GENERAL Applied Information Technology

GEN

Year: 11

Code: G1AIT G2AIT

Other Necessary Skills

- Interest in computing and software applications

Curriculum Focus

Digital technologies have transformed lives, including how people interact and exchange information. The course builds on your personal knowledge and skills when using digital technologies, and equips you with essential life and work skills required for further study or the workplace. You will develop an understanding of computer systems, the management of data, the use of a variety of software applications to investigate, design, construct and evaluate digital products and digital solutions. You will create, manipulate, store, and edit digital solutions using text, images, audio, video and animation.

Course Content

G1AIT

Personal Communication

The focus of this unit is to enable you to use technology to meet personal needs. You will develop a range of skills that enable them to communicate using appropriate technologies and to gain knowledge that assists in communicating within a personal context. The focus of this unit is to enable you to use technology to meet personal needs. You will develop a range of skills that enable you to communicate using appropriate technologies and to gain knowledge that assists in communicating within a personal context. You will learn design concepts, application skills, project management, hardware and application skills.

G2AIT

Working with Others

The focus of this unit is to enable you to use a variety of technologies to investigate managing data, common software applications and wireless network components required to effectively operate within a small business environment. You will examine the legal, ethical and social impacts of technology within society. You will enhance your application skills, understanding of project management, hardware knowledge and networks.

## Additional Information

**Skills and knowledge covered in this course will provide a transferable skill set that can be used in the wider world of the workplace and provide a basis for lifelong learning.**



You are strongly advised to read the detailed description in the SCSA Syllabus and Support Materials available at: [www.senior-secondary.scsa.wa.edu.au/syllabus-and-support-materials/technologies/applied-information-technology](http://www.senior-secondary.scsa.wa.edu.au/syllabus-and-support-materials/technologies/applied-information-technology)

# GENERAL Building and Construction

GEN

Year: 11

Code: G1BCN G2BCN

## Curriculum Focus

This course develops your knowledge and practical skills in building technologies in one of the biggest industries in Western Australia. In achieving the course outcomes, you will learn and practice building processes and technologies, principles of design, planning and project management. This course leads to employment options and further vocational education and industry training. You will work in an industry standard workshop using a range of tools and equipment. The three disciplines of the course include timber carpentry and woodworking, masonry work such as bricklaying and tiling, and metal work including electric welding and construction ironwork.

### G1BCN

You will explore properties of common, natural or pre-made construction material, their mechanical properties and use in construction. You will learn basic plan drawing and reading and applying these skills to building projects.

### G2BCN

You will build on your understanding of plan-reading with an application to building. You will explore properties of common, natural and pre-made construction materials and understand how they are produced. You will work with a variety of materials and develop a range of practical skills.

## Additional Information

This course requires students who have the patience to practise and learn practical hands-on skills along with the ability to problem-solve, design, plan and manage solutions. Students must also be willing to work independently and as part of a team. Students must also follow the OHS regulations of every situation.



### Compulsory OHS & PPE (Personal Protective Equipment) student requirements are:

- Clear safety glasses (AS 1336 or above)
- Safety cap work boots that cover ankles (AS2210 or above)
- Drill cotton industrial trousers and long sleeve shirt
- Restrain long hair and no jewellery

**PPE (Personal Protective Equipment)** requirements are compulsory for this subject. **Students not prepared to comply will not be able to participate in this course.** It is the responsibility of the student to purchase their own PPE.

You are strongly advised to read the detailed description in the SCSA Syllabus and Support Materials available at: [www.senior-secondary.scsa.wa.edu.au/syllabus-and-support-materials/technologies/building-and-construction](http://www.senior-secondary.scsa.wa.edu.au/syllabus-and-support-materials/technologies/building-and-construction)

# GENERAL Chemistry

GEN

Year: 11

Code: G1CHE G2CHE

## Other Necessary Skills

- Students should have an interest in Chemistry and/or future jobs in the Mining Industry
- C Grade in Year 10 Science

## Curriculum Focus

The Chemistry General course provides students with the opportunity to develop their understanding of the chemistry of materials encountered in their lives and everyday chemical reactions. Students apply chemical language by using symbols and formulae for common substances. The role of chemistry in contributing to a sustainable future, and in assisting in the protection of the natural environment, is considered; and students explore the chemistry of a range of materials, including crude oil, vegetable oils, biofuels and polymers. An appreciation of the experimental nature of chemistry is developed through laboratory activities.

## Course Content

### G1CHE

In this unit, students build on informal understandings of chemistry that they have already acquired through using different materials, tools and products in their lives, and through everyday chemical reactions, such as cooking, decomposition and rusting.

Students develop their understandings through scientific inquiry. They plan and conduct investigations to collect first-hand data safely and methodically. They investigate factors that affect solubility and change of state as well as gathering data to investigate factors that affect the rates of chemical reactions.

### G2CHE

In this unit, students investigate how chemistry plays an important part in their daily lives. Students appreciate the role of chemistry in contributing to a sustainable future by investigating recycling and disposal of community chemical wastes. They investigate ways that chemists assist in protecting the natural environment, such as conservation and management of our resources. They recognise and acknowledge that the use of scientific knowledge may have beneficial and/or harmful and/or unintended consequences.

In the laboratory, students investigate chemical changes involved in processes, such as food preservation and acid rain. They perform experiments to investigate reactions with acids and bases and use chemical aids, such as pH colour charts. They plan and conduct investigations to collect first-hand data safely and methodically.

## Additional Information

**Students will need to be able to work independently and collaboratively in a responsible manner. An interest in Science is advantageous.**



You are strongly advised to read the detailed description in the SCSA Syllabus and Support Materials available at:  
[www.senior-secondary.scsa.wa.edu.au/syllabus-and-support-materials/science/chemistry](http://www.senior-secondary.scsa.wa.edu.au/syllabus-and-support-materials/science/chemistry)



# GENERAL Design - Photography

GEN

**Year:** 11

**Code:** G1DESP G2DESP

## Curriculum Focus

This course is suited to those who are highly motivated and have a keen interest in Photography and Design. This course equips you with the knowledge and skills to understand and interpret design through the medium of photography. The photography context of this course will enable you to learn fundamental photographic and design skills, techniques, and practices within a modern, vibrant and exciting teaching environment. You will explore camera techniques and practical project work to produce high quality photographic images. This unit explores historical aspects of the photographic process. You will develop an understanding of many photographic elements including Photoshop, Lightroom techniques and the application of design elements in various forms of visual media.

## Course Content

### G1DESP

#### Design Fundamentals

The focus of this unit is to introduce design process and practice. You will learn that design can be used to provide solutions to design problems and communication needs. You are introduced to basic design skills and a range of techniques within a defined context to demonstrate control over the elements and principles of design. You will develop skills and knowledge in digital SLR camera fundamentals and learn image management in a digital environment. You will explore camera techniques and practical project work to produce high quality photographic images. You will develop an understanding of many photographic elements including Photoshop, Lightroom techniques and the application of design elements in various forms of visual media.

### G2DESP

#### Personal Design

You will learn how you visually communicate aspects of your personality, values and beliefs through your affirmations and your manipulation of personal surroundings and environments. You will explore design elements and principles and the design process in more detail. You will develop skills and knowledge in studio photography and graphic art concepts and design. You will explore personal design concepts and have the opportunity to participate in exhibitions of personal work, and competitions.

## Additional Information

**Students need to be prepared to undertake additional class work in their own time including photography, research and other course-related homework, of approximately 2-3 hours per week. Ideally students will have a sound basic computer skills, and some skills in Photoshop would be advantageous but not essential.**



You are strongly advised to read the detailed description in the SCSA Syllabus and Support Materials available at: [www.senior-secondary.scsa.wa.edu.au/syllabus-and-support-materials/arts/design](http://www.senior-secondary.scsa.wa.edu.au/syllabus-and-support-materials/arts/design)

# GENERAL Design - Technical Graphics

GEN

Year: 11

Code: G1DEST G2DEST

## Curriculum Focus

You are introduced to the design process and practice so it can be used to provide solutions to design problems. Introductory sketching techniques and computer-assisted drawing software are utilised to communicate your design ideas. You will use both Laser cutting technology and Vinyl cutting to complete personal designs. Software utilised for the program will assist less experienced students, but, at the same time, is powerful enough to extend the most capable Design student.

## Course Content

### G1DEST

You will be introduced to sketching techniques and design principles. You will learn elements of design and will have the opportunity to create your own projects.

### G2DEST

You will have the opportunity to apply your creative ideas when working on personal design solutions. This unit explores the influence of society and culture and their relationship with design.

## Additional Information

**This course is suited to any student who is interested in a career pathway in architecture, mechanics, interior design, sign writing and product design activities. The ability to think and work independently key aspects of this course and an interest in design and problem solving is desired.**



You are strongly advised to read the detailed description in the SCSA Syllabus and Support Materials available at:  
[www.senior-secondary.scsa.wa.edu.au/syllabus-and-support-materials/arts/design](http://www.senior-secondary.scsa.wa.edu.au/syllabus-and-support-materials/arts/design)

# GENERAL Drama

GEN

**Year:** 11

**Code:** G1DRA G2DRA

## Curriculum Focus

This unit engages you with the skills, techniques and conventions of dramatic storytelling and focuses on drama performance events for an audience other than their class members.

## Course Content

### G1DRA

You will learn the principles of improvisation, production roles and performance techniques. This unit explores the historical origins of theatre and representational theatre (realism). You will learn script writing, the requirements of a variety of production roles and how to apply your critical thinking skills when viewing a performance. You will have the opportunity to perform for an audience.

### G2DRA

The focus of this unit is Presentational theatre. You will enhance your performance skills by focusing on movement and voice. You will be a member of a production and perform for a real audience in the Peel Youth on Health competition.

## Additional Information

**This course combines both a performance and written component. A willingness to perform in front of an audience is key aspect of this course.**



You are strongly advised to read the detailed description in the SCSA Syllabus and Support Materials available at: [www.senior-secondary.scsa.wa.edu.au/syllabus-and-support-materials/arts/drama](http://www.senior-secondary.scsa.wa.edu.au/syllabus-and-support-materials/arts/drama)

# GENERAL English

GEN

Year: 11

Code: G1ENG G2ENG

## Curriculum Focus

The Year 11 General English course is designed to build your ability to read and respond to a variety of text types that are encountered in everyday life. You are taught how to comprehend written, visual and aural texts on a variety of levels in order to become critically literate citizens of the future. Writing and creating for a variety of purposes and audiences is also a focus of this course, developing your ability to employ language (written, spoken and visual) confidently and effectively.

Course Content

### G1ENG

This unit focuses on comprehending and responding to the ideas and information presented in texts. You will use a variety of strategies to assist comprehension as well as reading, viewing and listening to texts to connect, interpret and visualise ideas. You will learn how to respond personally and logically to texts by questioning, using inferential reasoning and determining the importance of content and structure. You will learn to communicate ideas and information clearly and correctly in a range of contexts.

### G2ENG

This unit focuses on interpreting ideas and arguments in a range of texts and contexts. You will analyse text structures and language features to identify ideas, arguments and values expressed in texts. The course explores the connections between purpose and structure and how a text's meaning is influenced by the context in which it is created and received.

## Additional Information

**This course is suited to those who need to develop their reading, oral, viewing and writing skills. The ability to work independently and collaboratively on assigned tasks is required.**





# GENERAL Food Science and Technology

GEN

**Year:** 11

**Code:** G1FST G2FST

## Curriculum Focus

This course has two components; Food Choices and Food for Communities. You will explore, through practical and theory lessons, the way they select and use foods and how this is determined by the family, customs, budget and availability of food with an emphasis on local foods.

## Course Content

### G1FST

#### Food Choices and Health

You will learn how to source, identify, classify and use ingredients for use in delicious meals. There is a focus on healthy choices food preparation and presentation skills. You will also learn precision cutting techniques and the safe handling of food.

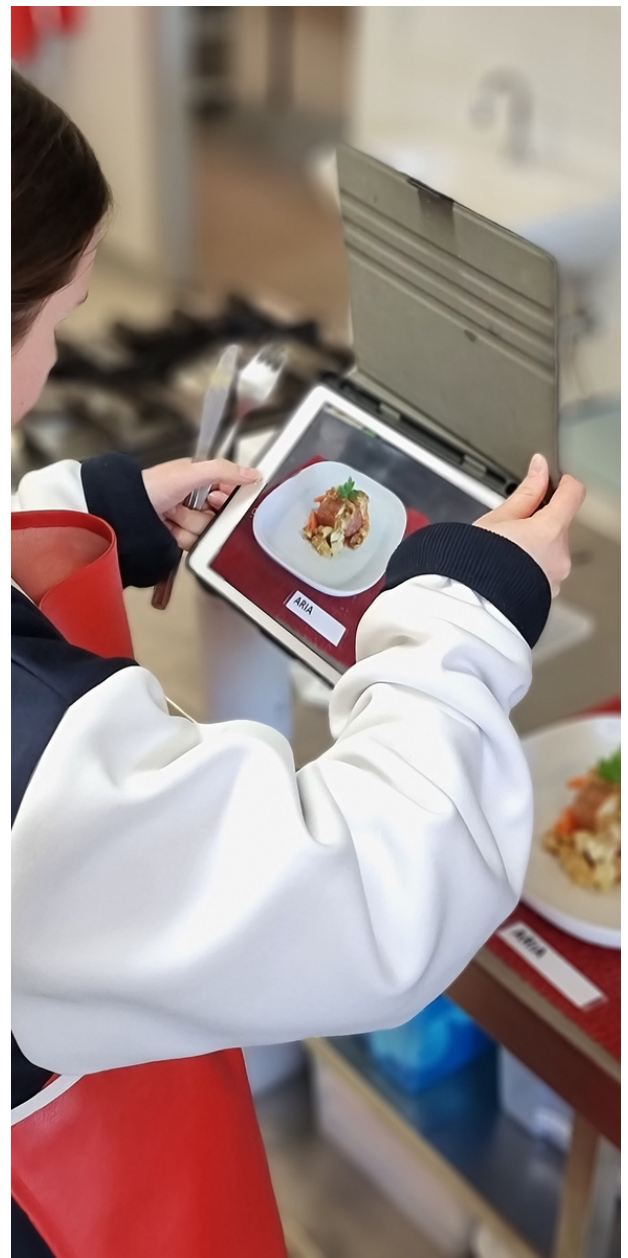
### G2FST

#### Food for communities

This unit explores the macronutrients needed for health and the importance of avoiding health issues due to an inadequate diet. You will build on your development of practical skills and investigate the use and preparation of a variety of staple foods. You will gain an understanding of workplace regulations and labelling requirements in Australia.

## Additional Information

**Students need to have the ability and willingness to work as a team member in small and large groups.**



You are strongly advised to read the detailed description in the SCSA Syllabus and Support Materials available at: [www.senior-secondary.scsa.wa.edu.au/syllabus-and-support-materials/technologies/food-science-and-technology](http://www.senior-secondary.scsa.wa.edu.au/syllabus-and-support-materials/technologies/food-science-and-technology)



# GENERAL Health Studies

GEN

**Year:** 11

**Code:** G1HEA G2HEA

## Curriculum Focus

This course focuses on the study of health and its impact on quality of life. You will develop the knowledge and skills required to promote individual and community health. Using an inquiry process, you will draw on your knowledge of health concepts and investigate health issues that interest them, whilst developing research skills they will be able to apply to a range of health issues or concerns.

## Course Content

### G1HEA

This unit focuses on personal health and wellbeing and what it means to be healthy. You will explore factors which influence your health and design action plans to improve health and achieve set goals. You will also start to look at the relationship between beliefs, attitudes, values and health behaviour, and the impact of social and cultural norms. You will explore how self-management and interpersonal skills are required in health settings to build effective relationships. Health inquiry skills are developed and applied to investigate and report on health issues.

### G2HEA

This unit focuses on personal health and introduces the many factors which influence health. The notion of prevention is central to this unit, and you will explore actions, skills and strategies to cope with health influences and improve health. In addition to health determinants, the influence of decision making and the role of communities in shaping norms and expectations are explored. Self-management and cooperative skills are examined and you will continue to develop and apply health inquiry skills.

## Additional Information

**Students will need to work independently at times to complete research and assessment tasks. The ability to work in teams as a productive member is also important. Some public speaking to small groups of people (up to 6) will be required.**



You are strongly advised to read the detailed description in the SCSA Syllabus and Support Materials available at:  
[www.senior-secondary.scsa.wa.edu.au/syllabus-and-support-materials/health-and-physical-education/health-studies](http://www.senior-secondary.scsa.wa.edu.au/syllabus-and-support-materials/health-and-physical-education/health-studies)

# GENERAL Marine and Maritime Studies

GEN

Year: 11

Code: G1MMS G2MMS

## Curriculum Focus

This course provides opportunities for you to apply theoretical knowledge through practical activities and learning experiences both within, and outside of, the classroom. Based in our Maritime Training Centre in Dawesville, you will develop responsible and competent boat handling and navigation skills, and, in doing so, demonstrate an understanding of nautical concepts. You will develop a knowledge of seaworthy craft, and the basics of good boat design, construction and maintenance. You will also develop personal water-based skills (snorkeling) to allow you to engage directly with the marine environment. The course will provide you with a solid foundation of skills and knowledge suitable for a wide range of vocational or recreational pathways in boating (commercial and recreational), scuba, vessel design and construction (maritime engineering) resource management, marine archaeology or marine science.

## Course Content

### G1MMS

In Oceanography you will learn about wind formation, tides, waves and currents including Western Australian currents. You will examine the effects on the environment of local, recreational and commercial fishing and learn about sustainability, eco diversity and responsibility of marine resources. You will engage in a Blue Swimmer Crab study and will work within a team to sail pacer yachts.

### G2MMS

This unit focuses on the marine ecosystem and you will understand the importance of protected marine parks, sanctuary zones and reserves. You will build on your knowledge of Oceanography and engage in sail-racing techniques and practice. You will participate in a maritime archaeology study which includes a visit to the Maritime Museum.

## Additional Information

**Students will be required to purchase a JTC rash vest. Students must also be a competent swimmer - able to swim 200 metres plus tread water for 10 minutes. An interest in the marine environment is a key aspect of this course.**



You are strongly advised to read the detailed description in the SCSA Syllabus and Support Materials available at: [www.senior-secondary.scsa.wa.edu.au/syllabus-and-support-materials/science/marine-and-maritime-studies](http://www.senior-secondary.scsa.wa.edu.au/syllabus-and-support-materials/science/marine-and-maritime-studies)

# GENERAL Materials, Design and Technology

GEN

Year: 11

Code: G1MDTW G2MDTW

## Curriculum Focus

You will be introduced to the fundamentals of design using wood as the focus medium. Throughout the unit, you will learn about the origins, classifications, properties and suitability for purpose of the materials you are using, and will be introduced to a range of production equipment and techniques. You will develop hand skills and production management strategies and be given the opportunity to realise your design ideas through the production of your design project.

## Course Content

### G1MDTW

You will learn safe practices when using machinery and hand tools in the workshop. You will build up a repertoire of essential skills and techniques and apply them to design and make a major project.

### G2MDTW

You will expand your knowledge and understanding of safe woodworking practices and learn comprehensive static machinery techniques. You will be introduced to furniture design procedures and then apply your skills and knowledge to manufacture your own furniture item in the workshop.

## Additional Information

This course requires students who have the patience to practise and learn practical hands-on skills along with the ability to problem-solve, design, plan and manage solutions. Students must also be willing to work independently and as part of a team. Students must also follow the OHS regulations of every situation.



### Compulsory OHS & PPE (Personal Protective Equipment) student requirements are:

- Clear safety glasses (AS 1336 or above)
- Safety cap work boots that cover ankles (AS2210 or above)
- Drill cotton industrial trousers and long sleeve shirt
- Restrain long hair and no jewellery

**PPE (Personal Protective Equipment)** requirements are compulsory for this subject. **Students not prepared to comply will not be able to participate in this course.** It is the responsibility of the student to purchase their own PPE.

You are strongly advised to read the detailed description in the SCSA Syllabus and Support Materials available at: [www.senior-secondary.scsa.wa.edu.au/syllabus-and-support-materials/technologies/materials-design-and-technology](http://www.senior-secondary.scsa.wa.edu.au/syllabus-and-support-materials/technologies/materials-design-and-technology)



# GENERAL Mathematics Essential

GEN

Year: 11

Code: G1MAE G2MAE

## Curriculum Focus

Mathematics Essential is a General course which focuses on using mathematics effectively, efficiently and critically to make informed decisions. It provides you with the mathematical knowledge, skills and understanding to solve problems in real contexts for a range of workplace, personal, further learning and community settings. This course provides the opportunity for you to prepare for post-school options of employment and further training.

## Course Content

### G1MAE

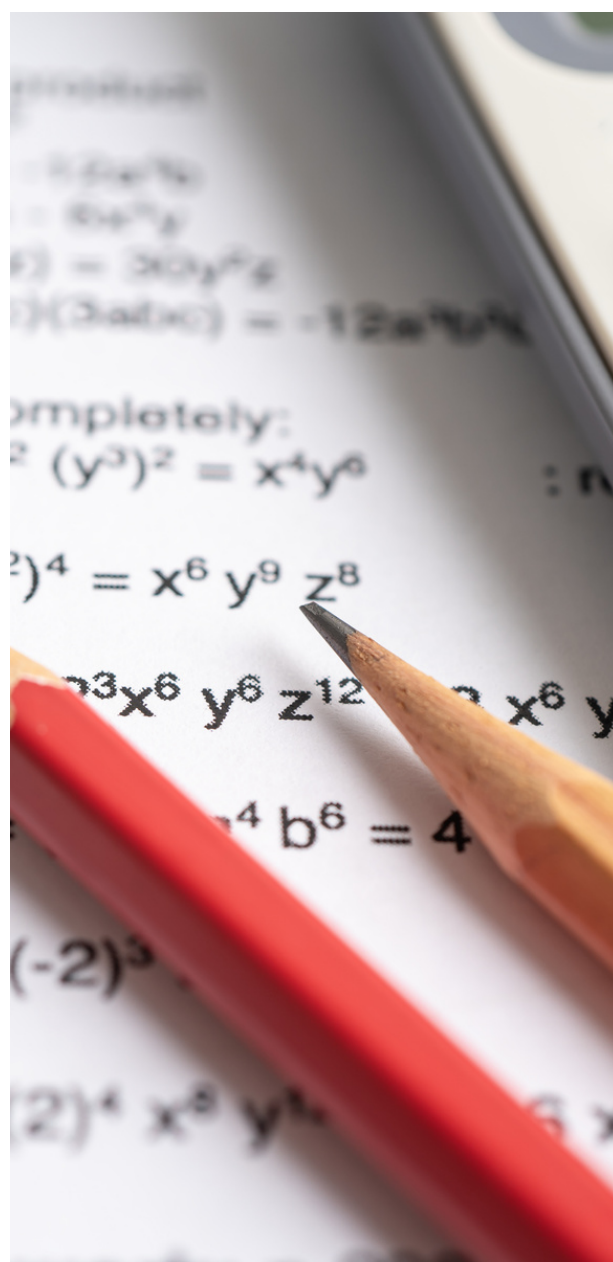
Unit 1 provides you with the mathematical skills and understanding to solve problems relating to calculations, the use of formulas to find an unknown quantity, applications of measurement and the use and interpretation of graphs. You will learn to apply the content of all topics in contexts which are meaningful and of interest, such as "Earning and Managing Money and Nutrition and Health".

### G2MAE

Unit 2 provides you with the mathematical skills and understanding to solve problems related to representing and comparing data, percentages, rates and ratios, and time and motion. You will learn to apply the content of all topics in contexts which are meaningful and of interest, such as "Transport and Independent Living".

## Additional Information

This course involves the use of practical applications in real world situations. The assessments consist of response tasks, an external set task(EST) and problem-solving activities.



You are strongly advised to read the detailed description in the SCSA Syllabus and Support Materials available at: [www.senior-secondary.scsa.wa.edu.au/syllabus-and-support-materials/mathematics/mathematics-essential](http://www.senior-secondary.scsa.wa.edu.au/syllabus-and-support-materials/mathematics/mathematics-essential)

# GENERAL Modern History

GEN

**Year:** 11

**Code:** G1HIM G2HIM

## Curriculum Focus

The Modern History General course allows you to gain insights into your own society and its values. It helps you to understand why nations and people hold certain values, and why values and belief systems vary from one group to another. This knowledge is crucial to the development of active and informed citizens in any society. The study of history ensures that you gain essential knowledge of the past – its legacy and heritage.

## Course Content

### G1HIM

This unit allows students to become aware of the broad sweep of history and our place within the historical narrative. Students become aware of the values, beliefs and traditions within a society, the continuity between different societies and different time periods, and the importance of individuals within a time period.

### G2HIM

Students learn that societies consist of individuals and institutions that have various types of power and authority and that these interact with each other. Students learn how power and authority is distributed throughout a group or society, that individuals and groups seek to influence the structures of power and authority and the difficulties of using these structures in a just or equitable manner. In learning about the structures and institutions of societies, they make comparisons and judgements about other societies and their own society.

## Additional Information

**This course requires a well-developed ability to present an argument and apply research and writing skills.**



You are strongly advised to read the detailed description in the SCSA Syllabus and Support Materials available at:  
[www.senior-secondary.scsa.wa.edu.au/syllabus-and-support-materials/humanities-and-social-sciences/modern-history](http://www.senior-secondary.scsa.wa.edu.au/syllabus-and-support-materials/humanities-and-social-sciences/modern-history)



# GENERAL Music

GEN

**Year:** 11

**Code:** G1MUS G2MUS

## Additional Information

**A passion for music is strongly encouraged.**

### Curriculum Focus

You will be encouraged to explore a range of musical experiences through different musical contexts. The course consists of a written component and a practical component incorporating aural and theory, composing and arranging, investigation and analysis and performance.

### Course Content

#### G1MUS

In this unit, you will develop your skills, knowledge and understanding to listen to, compose, perform and analyse music. You will develop aural and music literacy skills and learn how the elements of music can be applied when performing, composing and responding to music. You will learn about how music is created and performed, analysing musical works and exploring how social, cultural and historical factors shape music in a specific selected context for study. You will develop the skills, confidence and stylistic awareness to engage in music-making as performers and audience members both individually and collaboratively. There is a written and a practical component to this unit.

#### G2MUS

This unit builds on the content of G1MUS. In this unit, you will develop your skills, knowledge and understanding to listen to, compose, perform and analyse music. You will develop aural and music literacy skills and learn how the elements of music can be applied when performing, composing and responding to music.

You will learn about how music is created and performed, analysing musical works and exploring how social, cultural and historical factors shape music in a specific selected context for study. You will develop the skills, confidence and stylistic awareness to engage in music making as performers and audience members both individually and collaboratively. There is a written and a practical component to this unit.



You are strongly advised to read the detailed description in the SCSA Syllabus and Support Materials available at:  
[www.senior-secondary.scsa.wa.edu.au/syllabus-and-support-materials/arts/music](http://www.senior-secondary.scsa.wa.edu.au/syllabus-and-support-materials/arts/music)

# GENERAL Outdoor Education

GEN

Year: 11

Code: G1OED G2OED

## Minimum Entry Requirement

- Competent swimmer – able to swim 200m in open water
- Availability to attend an expedition (2 days) in both semesters.

## Curriculum Focus

Through interaction with the natural world, this course aims to develop an understanding of our relationships with the environment, as well as with others and ourselves. The ultimate goal of the course is to contribute towards a sustainable world. The Outdoor Education General course is based on the experiential learning cycle. This cycle is made up of three stages; plan, do and review. You will plan for outdoor experiences, participate in these experiences and reflect on their involvement.

## Course Content

### G1OED

You will participate in outdoor adventure activities while learning practical techniques that allow you to engage in safe participation. You will understand the importance of planning and organisation to safely participate in short duration excursions and expeditions. In this unit, you will apply your skills and understandings to orienteering, mountain biking and camping.

### G2OED

In this unit, you will be challenged to step outside your comfort zone. You will build on your planning and organisational skills to prepare for an extended excursion and/or short stay expeditions. You will learn the important skill of working within a team and you will have opportunities to develop and demonstrate your leadership skills. You will apply your skills and understandings to canoeing, abseiling and roping and you will further develop your knowledge of camping.

## Additional Information

There are two expeditions in year 11, each of two days duration and you must attend both of these expeditions. The first is an overnight camp that may include mountain biking and navigation with a cost of \$30. The second expedition involves a day trip to Margaret River which may include canoeing and roping with a maximum cost of \$80 and a one day excursion abseiling in the Perth hills.



## Compulsory OHS & PPE (Personal Protective Equipment) student requirements are:

- You are expected to purchase a school rash vest to be worn for canoeing.

You are strongly advised to read the detailed description in the SCSA Syllabus and Support Materials available at: [www.senior-secondary.scsa.wa.edu.au/syllabus-and-support-materials/health-and-physical-education/outdoor-education](http://www.senior-secondary.scsa.wa.edu.au/syllabus-and-support-materials/health-and-physical-education/outdoor-education)



# GENERAL Physical Education

GEN

**Year:** 11

**Code:** G1PES G2PES

## Curriculum Focus

The course involves a balance of theory and practical components. You will develop the knowledge and understanding of functional anatomy, motor learning and coaching, exercise physiology, sports psychology, biomechanical principles and their involvement in the physical performance as well as the mental skills that assist with improved performance as a team member or as an individual.

## Course Content

### G1PES

You will learn about functional anatomy, the classification of motor skills and the role of biomechanical principles. There is a focus on the components of fitness and phases of skill learning. You will learn how to utilise successful strategies and skills when playing AFL and softcross. This unit includes a 50% practical component and a 50% written component.

### G2PES

You will further develop physical skills and tactics while learning about training principles. There is a focus on biomechanical principles of force and motion and you will enhance your understanding of functional anatomy. You will learn the important role of mental skills when engaging in soccer and badminton. This unit includes a 50% practical component and a 50% written component.

## Additional Information

**A willingness to participate in a variety of sports is required.**



You are strongly advised to read the detailed description in the SCSA Syllabus and Support Materials available at: [www.senior-secondary.scsa.wa.edu.au/syllabus-and-support-materials/health-and-physical-education/physical-education-studies](http://www.senior-secondary.scsa.wa.edu.au/syllabus-and-support-materials/health-and-physical-education/physical-education-studies)

# GENERAL Psychology

GEN

**Year:** 11

**Code:** G1PSY G2PSY

## Curriculum Focus

In the Psychology General course you will be introduced to psychological knowledge which supports an understanding of the way individuals function in groups. You will learn about well-known psychological models and theories, and the methods used to conduct scientific investigations in the discipline of psychology. Acquiring this foundation of scientific method and critical thinking is a valuable skill which you can apply throughout your study, work and everyday lives. The study of Psychology is highly relevant to further studies in the health professions, education, human resources, social sciences, sales, media and marketing management.

## Course Content

### G1PSY

This unit provides a general introduction to personality and intelligence. You will explore a number of influential theories to gain an understanding of how the mind works. Beyond the individual, you will examine the role of verbal and non-verbal communication in initiating, maintaining and regulating relationships.

### G2PSY

This unit introduces you to the human brain and the impact of factors influencing behaviour, emotion and thought. The scientific study of development is an important component of psychology and you will review aspects of development and the role of nature and nurture. You will learn about stages of development and the impact of external factors on personality development. The impact of group size on behaviour and the influence of culture in shaping attitudes is explored.

## Additional Information

**This course requires a well-developed ability to read theory texts and to apply critical thinking practices. A sound ability to write is advantageous.**



You are strongly advised to read the detailed description in the SCSA Syllabus and Support Materials available at:  
[www.senior-secondary.scsa.wa.edu.au/syllabus-and-support-materials/science/psychology](http://www.senior-secondary.scsa.wa.edu.au/syllabus-and-support-materials/science/psychology)

# GENERAL Visual Arts

GEN

**Year:** 11

**Code:** G1VAR G2VAR

## Curriculum Focus

This course allows you to express your imagination in the making and presentation of art works. You will develop ability and confidence in your creative skills and will learn a range of techniques to develop artworks. You will create a studio project based upon the foundation work. You will have the opportunity to create a range of beautiful artworks for display in exhibitions at community events.

## Course Content

### G1VAR

The focus of this unit is on 'Experiences'. You will develop skills to produce artworks that are inspired by your own experiences and observations of the immediate environment. You will engage in a number of activities that may include ceramics, painting, sculpture, graphic design, textiles and fashion design.

### G2VAR

The focus of this unit is 'Explorations'. You will explore ways to express your personal beliefs, opinions and feelings. You will engage in a number of creative activities that will build on your skills and these may include ceramics, painting, sculpture, graphic design, textiles and fashion design. You will have the opportunity to create a range of beautiful artworks for display in exhibitions at community events.

## Additional Information

**Strong drawing skills are preferred but not essential.**



You are strongly advised to read the detailed description in the SCSA Syllabus and Support Materials available at:  
[www.senior-secondary.scsa.wa.edu.au/syllabus-and-support-materials/arts/visual-arts](http://www.senior-secondary.scsa.wa.edu.au/syllabus-and-support-materials/arts/visual-arts)



# ENDORSED PROGRAM Workplace Learning

# WPL

## Additional Information

**Strong organisational and interpersonal skills are required for this program.**



Year: 11

**Code:** 11ADWPL Units 1 and 2

### Course Content

Workplace Learning is an Endorsed Program that is offered at John Tonkin College. To complete this program a student works in one or more real workplace/s to develop a set of transferable workplace skills. The student must record the number of hours completed and tasks undertaken in the workplace in their Workplace Learning Logbook. You must also provide evidence of your knowledge and understanding by completing all questions in the Workplace Learning Skills Journal. This course is offered as one day per week in the workplace, in most cases a Thursday or Friday. Each unit comprises 55 hours and you are expected to complete Units 1 & 2. As well as completing the 110 hours in the workplace, you must complete and submit your Logbook and Journal so you can be awarded a subject equivalent. This can take place in a paid or unpaid **workplace environment**.

### ADWPL UNPAID

This is an excellent opportunity for you to consolidate the skills learned in your TAFE course or general subjects in the industry area in which you anticipate exploring as a career pathway. In this way you can practice the skills you learn in an actual workplace.

You will begin the year completing a Work Readiness Program. Once completed satisfactorily, you will begin your Workplace and continue on your allocated day until the 110 hours are completed until the end of the year.

It is recommended that ADWPL students also enrol in Career and Enterprise G1CAE/G2CAE or Certificate II Skills for Work and Vocational Pathways which is offered as a VET at Schools course.

### Delivery method for ADWPL Unpaid

- 15% - classroom delivery completing Work Readiness Program, documentation, and Logbook and Skills Journal orientation
- 85% - on the job in the workplace.

### Minimum Commencement Requirements for ADWPL Unpaid

- You must demonstrate appropriate behaviour at school (dress, attendance and attitude) prior to work placement.
- Successful completion of the Work Readiness Program.

# ENDORSED PROGRAM Workplace Learning

WPL

Year: 11

**Code:** 11ADWPL Units 1 and 2

Course Content  
Continued..

## ADWPE PAID

If you have had a part time job for a minimum of 3 months you may use this job to gain a subject equivalent via ADWPL Paid. You must complete an ADWPL Paid Application form that includes the signed approval of your employer. No time is allocated for this placement on student timetables. You just continue to work in your part time job and require the employer to sign off in the ADWPL Journal/Logbook. You must complete the Journal /Logbook and 110 hours of work. While completing the 110 hours in the workplace you must complete and submit your Logbook and Journal so you can be awarded a subject equivalent.

## Delivery method for ADWPL Paid

- 100% workplace delivery in part time job
- ADWPL Paid will appear on your timetable on Thursday, period 8. You DO NOT attend this class. A teacher will be appointed to this group - their role is to coordinate and liaise with you and employers in completion of the Journal/Logbook.

## Links to recognised Qualifications

Workplace Learning adds experience to a wide range of Certificate courses and looks professional on a Resume.







# CONTACT US

John Tonkin College we believe that communication between the College and parents is vital to ensure that you are supported to meet your academic and personal potential.

Throughout the year the College will contact parents for a variety of reasons, including verification of absences, invitations to special events, notification of parents evenings, feedback about your performance and to help resolve issues that may arise.

Parents should also feel comfortable to contact the College. We are happy to assist with your enquiries and to direct you to the people who can help you. If you have any concerns or questions, please do not hesitate to ask for assistance.

## MET Campus

Reception Hours

Monday - Friday 8:00am - 4:00pm

Address

John Tonkin College  
Education Drive Mandurah WA 6210

Postal Address

PO Box 684, Mandurah, WA, 6210

Phone

(08) 9583 0500



Fostering an optimistic future by empowering our college community  
to succeed.

**MET Campus**

Education Drive, Mandurah WA, 6210

Email: [admin@johntonkincollege.wa.edu.au](mailto:admin@johntonkincollege.wa.edu.au)

Phone: (08) 9583 0500

[www.johntonkincollege.wa.edu.au](http://www.johntonkincollege.wa.edu.au)

   @johntonkincollege